



BOLOGNAFIERE
29/31 MARCH 2023
21THedition

TECHNOLOGIES WITHOUT LIMITS
MECSPE, THE ABILITY TO PROMOTE THE COMPANIES SUCCESS

MECSPE'S TRADE TOPICS

ADDITIVE MANUFACTURING / AUTOMAZIONE E ROBOTICA / CONTROLLO E QUALITÀ / EUROSTAMPI - MACCHINE E SUBFORNITURA PLASTICA, GOMMA E COMPOSITI / FABBRICA DIGITALE / LOGISTICA / MACCHINE E UTENSILI / MACCHINE, MATERIALI E LAVORAZIONI DELLA LAMIERA / MATERIALI NON FERROSI E LEGHE / POWER DRIVE / SUBFORNITURA ELETTRONICA / SUBFORNITURA MECCANICA / TRATTAMENTI E FINITURE

Project and management



in collaboration with



follow us on



WWW.MECSPE.COM

at the same time with



AREA SUBFORNITURA

SUBFORNITURA ELETTRONICA

- CEM (contract electronics manufacturers)
- Cables ▪ EMS (electronics manufacturing service)
- PCB (printed circuit board manufacturers)
- Engineering and design firms

SUBFORNITURA MECCANICA

- Precision mechanical processing ▪ Metal carpentry
- Mechanical construction ▪ Fasteners ▪ Foundries
- Small parts ▪ Wire working ▪ Outsourced industrial processes ▪ Micro-processing

MATERIALI NON FERROSI - LEGHE

- Non-ferrous materials processing (Aluminium, Titanium, Magnesium, Light Alloys) ▪ Die-casting
- Foundries ▪ Outsourced industrial processes
- Technologies ▪ Design ▪ Engineering

AREA MECCANICA

MACCHINE E UTENSILI

- Machine tools ▪ Equipment ▪ Tools
- Design software

MACCHINE, MATERIALI E LAVORAZIONI DELLA LAMIERA

- Bending ▪ Moulding ▪ Cutting ▪ Assembly
- Welding ▪ Materials ▪ Software

TRATTAMENTI E FINITURE

- Surface treatment systems ▪ Furnaces ▪ Galvanic finishes ▪ Chemical and electronic processes
- Washing ▪ Metallising, Glazing, Galvanising
- Products and accessories for treatments
- Heat Treatments ▪ Coating

AREA PLASTICA, GOMMA E COMPOSITI

EUROSTAMPI - MACCHINE E SUBFORNITURA PLASTICA, GOMMA E COMPOSITI

- Plastics, rubber and composite processing
- Machines and plants ▪ Innovative materials
- Moulding ▪ Extrusion ▪ Packaging ▪ Blow Moulding
- Moulds ▪ Models ▪ Normalised parts for moulds
- Design ▪ Simulation and design software
- Micro-processing ▪ Auxiliary equipment

AREA INDUSTRIA 4.0

CONTROLLO E QUALITÀ

- Quality certification and control ▪ Metrology
- Measurement instruments ▪ Laboratory tests
- Calibration ▪ Analysis equipment ▪ Vision

AUTOMAZIONE E ROBOTICA

- Automation and robotics ▪ Assembly ▪ Mounting and handling

POWER DRIVE

- Mechanical power transmission systems ▪ Oil-pressure
- Pneumatics ▪ Mechatronics ▪ Motion control
- Maintenance ▪ Compressed air

LOGISTICA

- Wrapping ▪ Packaging ▪ Handling ▪ Material handling
- Lean manufacturing ▪ Warehouse management software ▪ Supply chain management
- Outsourcing ▪ Safety ▪ PPE

FABBRICA DIGITALE

- Industrial computing ▪ IoT ▪ Industrial sensors
- Cloud-manufacturing ▪ Automatic identification technologies ▪ Applications, devices, instrumentation and smart components for interpreting and interconnecting processes

ADDITIVE MANUFACTURING

- Rapid prototyping ▪ Rapid manufacturing
- 3D printing ▪ Systems and services for reverse engineering ▪ Additive technology ▪ Materials
- Services ▪ Hardware: 3D printers and scanners, accessories ▪ Simulation and design software



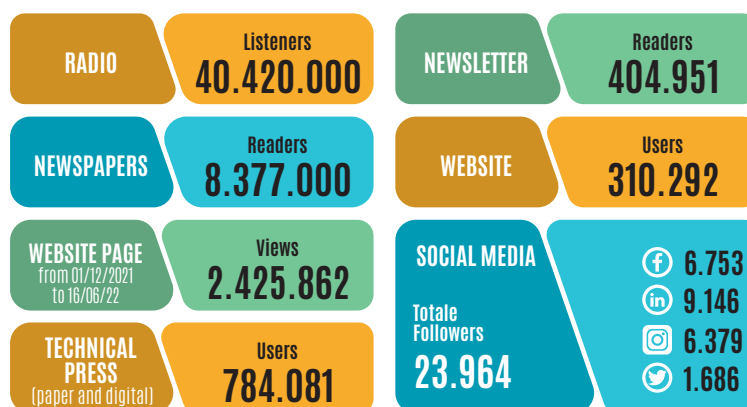
VISITORS



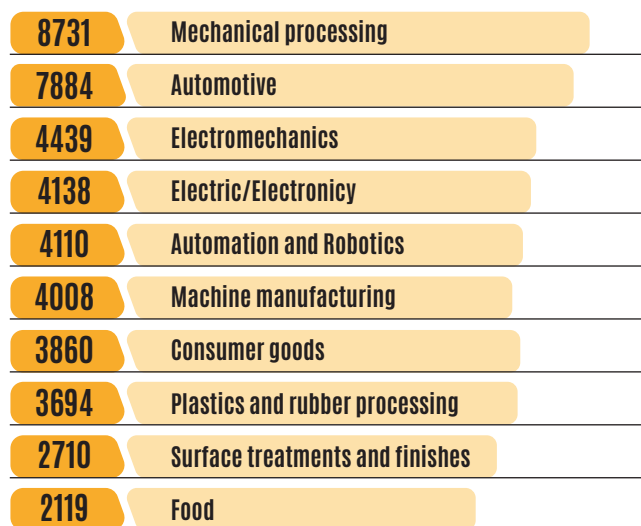
Bologna, 29/31 March 2023



USERS REACHED THROUGH THE COMMUNICATIONS CAMPAIGN



BUSINESS SECTORS **



| | | | |
|------|--|-----|--|
| 2090 | Energy | 896 | Motorsport |
| 1940 | Medical | 844 | Nautical Industry |
| 1886 | Aerospace | 829 | Raw material production |
| 1777 | Transport | 814 | Logistics |
| 1755 | Agriculture | 730 | Textiles and Clothing |
| 1569 | Packaging | 621 | Recycling |
| 1390 | Engineering, planning and design firms | 601 | Hydraulic and pneumatic power transmission systems |
| 1110 | Construction | 521 | Lighting technology |
| 1036 | Chemical, pharmaceutical and petrolchemical industry | 447 | Plumbing |
| 1019 | Software | 304 | Goldsmithery |
| 982 | Housewares, household appliances | 271 | Die-casting |

HIGH-PROFILE VISITORS ***



* MECSPE data 2022

** Multiple answer

*** The main professions

CHANGE TO GROW



Bologna, 29/31 March 2023

The attention of MECSPE towards exhibiting companies is also tangible in its courage to make important decisions, like moving the exhibition venue to the Bologna exhibition centre.

Mecspe, the reference exhibition event for the manufacturing industry and the smart factory, sets clear targets for growth, development and improvement in the search for new international opportunities that will involve all exhibitors and professionals from Italy and beyond.

Over time such a deeply-rooted spirit of collaboration shall open all the doors leading onto increasingly better results and within less time.



SPECIAL INITIATIVES

THE CORE OF THE EXHIBITION: MECSPE LIVE ACADEMY

Mecspe, through its exhibition core, represents a real incubator and driver of innovative solutions for the manufacturing industry.

A breeding ground for technological ideas that aims to involve young people, who are at the heart of the future of companies, through training and interactive activities.

MECSPE LIVE ACADEMY will be a theory and practice training area developed in cooperation with Accademia Tecniche Nuove, exhibitors of the event, trade associations and institutional partners. Focus of this edition: MACHINES - ADDITIVE MANUFACTURING - AUTOMATION AND ROBOTICS

THE ARGUMENTS

- IoT
- Big Data
- Cloud Manufacturing
- Digital Twin
- Augmented and Virtual Reality
- Distributed Manufacturing with Additive
- Robotics and Artificial Intelligence
- Technological design tools
- Predictive plant management and maintenance

SOLUTION AWARD

For the seventh consecutive year, during MECSPE 2023, "Automazione Integrata" magazine organizes the Robotics Innovation Award. The award is dedicated to companies, startups, universities, research centers, laboratory spinoffs, single or in consortium, owners of an innovative application as technology providers, system integrators and/or end users.

START UP FACTORY

A tailor-made area for **start-ups** wishing to promote their competitiveness through innovation activities in a highly specialized environment.

Participation in special initiatives is reserved for exhibitors who must submit their application to the Senaf Administrative Office For further information on how to participate:

www.mecspe.com - info@mecspe.com

THE ADVANTAGES FOR THE EXHIBITORS

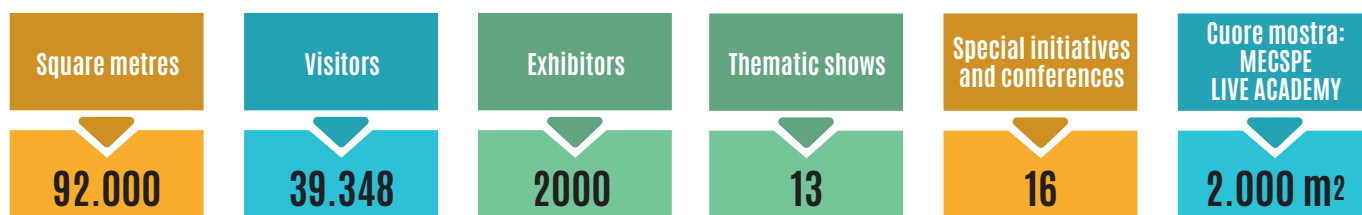


Bologna, 29/31 March 2023

EXHIBITING AT MECSPE MEANS ENJOYING VARIOUS ADVANTAGES, SUCH AS

- ▶ Meeting the decision-makers
- ▶ Interacting with international buyers and making use of a business matchmaking service
- ▶ Exhibiting in a venue that is close to Italy's main industrial districts
- ▶ Digital communication tools to consolidate and communicate your presence at the event
- ▶ Visibility generated by an intense communications campaign in Italian and international specialised publications and national and local newspapers.

FIGURES STEADILY ON THE RISE (2022 edition data)



OTHER TRADE FAIRS ORGANISED BY SENAF



www.senaf.it



EXHIBITING AT MECSPE



Bologna, 29/31 March 2023

The stand is the most visible element and must be designed according to your target and the corporate image you want to communicate. The function of the stand varies depending on whether you want to just showcase products, demonstrate the use of machines and devices, or welcome your clients in a lounge and refreshment area.

Once you've identified the type of stand you need, you can choose how to fit it out.

Raw space: fit-out to be carried out by the exhibitor, starting from 24 m²;

Standard pre-fitted stand: mandatory for stands measuring up to 24 m²;

Prestige pre-fitted stand: for stands measuring 32 m² or more. In addition to the advantages of the standard pre-fitted ones, this type of stand allows for great customisation with a vast selection of furnishings and colours;

Formula Start 12 m²: provided by the event's official fitter.

RAW SPACE

The solution for companies with their own booth, starting from 24 m² for € 199,00/m²

Registration fee € 550,00 + Essential Services* € 10,50/m²

STAND WITH BASIC FITTING

Area starting from 16 m² - Mandatory fitting for stands measuring up to 24 m²

This formula includes: area with 1 open side, fabric walls (h.3 metres), sign with company name, carpet, a table, 3 chairs, courtesy kit for hanging signs (4 hooks with wire) waste basket, coat hanger, power and lighting.

€ 289,00/m² (area € 199,00/m² + fit-out € 90,00/m²)

Registration fee € 550,00 + Essential Services € 10,50/m²



STAND WITH PRESTIGE FITTING

Area starting from 32 m²

This formula includes: area, fabric walls (h.4 metres), carpet (colours to be chosen from the range available), sign with company name, closet, reception desk with stools, furnishings and courtesy kit for hanging signs (4 hooks with wire).

€ 334,00/m² (area € 199,00/m² + fit-out € 135,00/m²)

Registration fee € 550,00 + Essential Services € 10,50/m²



START FORMULA 12 m²

Reserved for first-timers only

Includes: area with 1 open side, fabric walls, sign with company name, carpet, table, chairs, courtesy kit for hanging signs (4 hooks with wire) waste basket, coat hanger, lighting and power, registration fee.

€ 4.144,00 all inclusive - Registration fee included

+ Essential Services € 10,50/m²



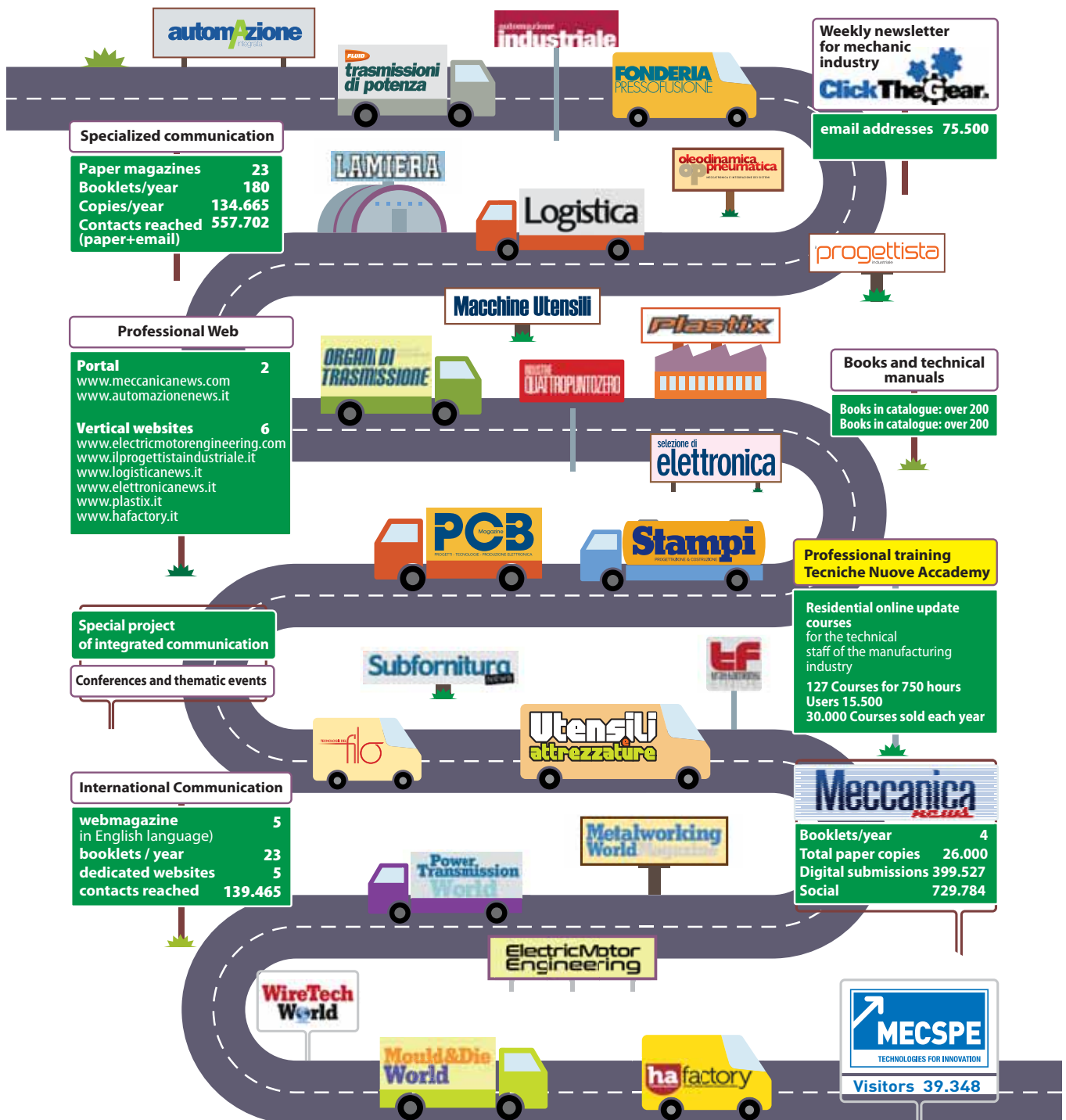
N.B. Additional open sides: +7% each

You can view the various types of fit-out and furnishings (display cases, chairs, storage room etc.) in the part of the official fitter's website dedicated to exhibitors.

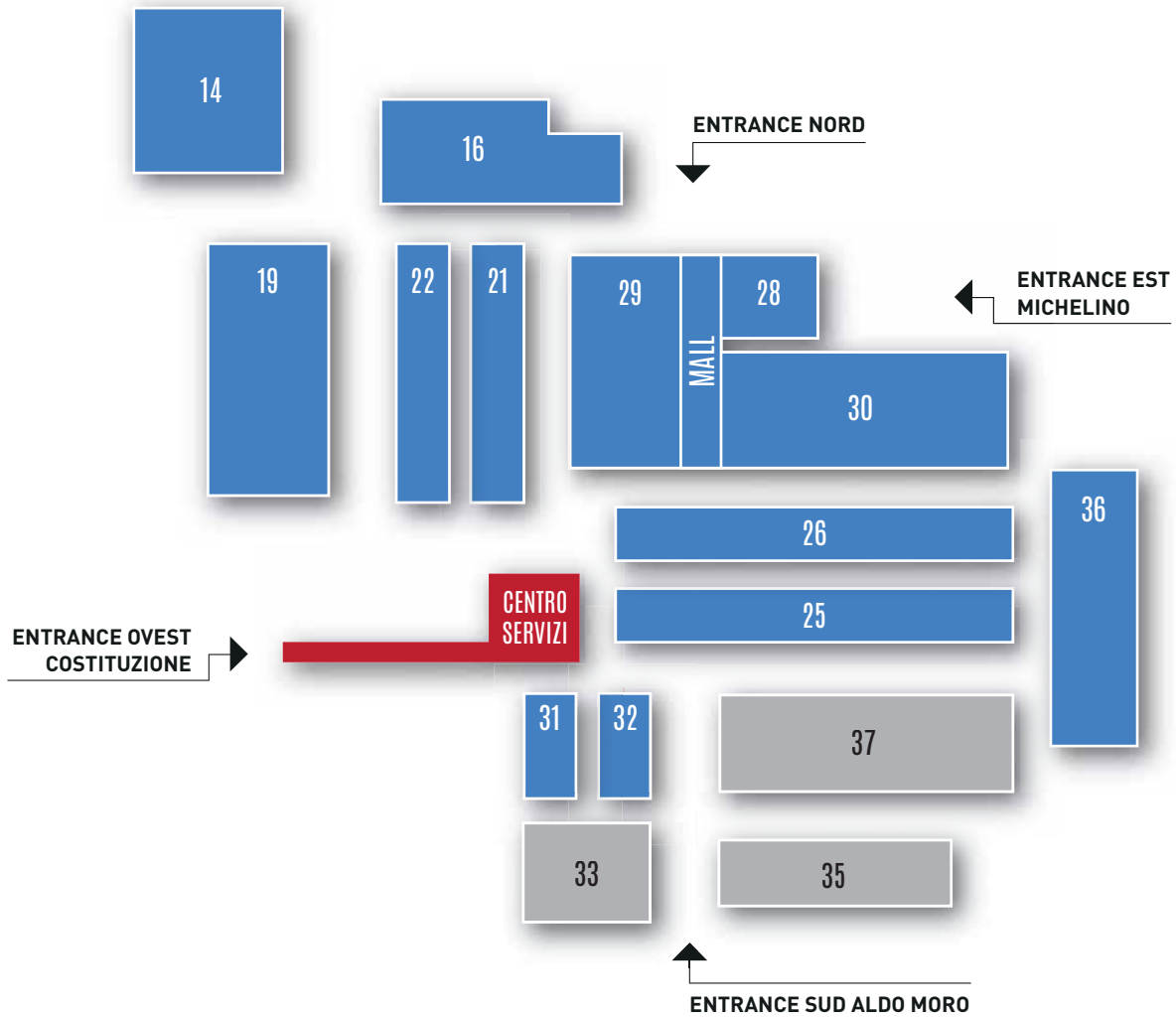
* "various essential services": single-phase connection and testing of the electrical system, with maximum power used up to 5 kW, 1 WI-FI internet connection, fire extinguisher supply according to law, municipal advertising charges on signs and the Exhibitor's company name, ordinary cleaning of the stand - € 10,50 + VAT per m².

All stand images are purely indicative.

The road of integrated communication of Tecniche Nuove for the manufacturing industry



THE EXHIBITION CENTRE



The value of BolognaFiere

- Strengthening connections and infrastructures
- Potential growth in visitors
- Improving international development
- Expansion of product sectors with new production areas
- Increased availability of exhibition space



at the same time with

metefi

EXPO OF CUSTOMIZED TECHNOLOGY FOR THE ALUMINIUM,
FOUNDRY CASTINGS & INNOVATIVE METALS INDUSTRY

Project and direction



In collaboration with



Follow us on



DIRECT CONTACT

info@mecspe.com



SCAN ME